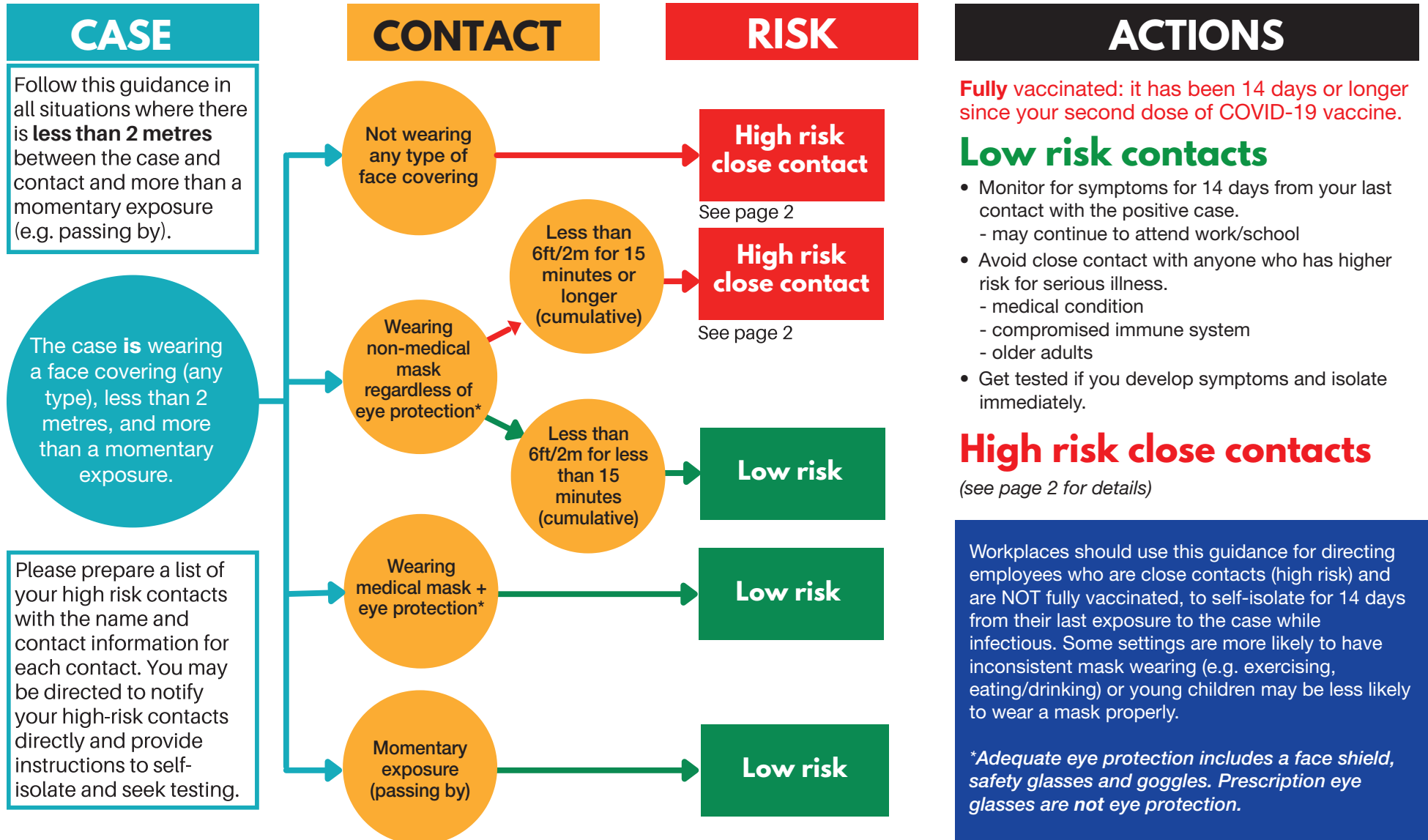


COVID-19 Contact Tracing

This chart applies to individuals who are NOT fully vaccinated

Contact tracing identifies anyone who you had high risk contact with beginning **48 hours** before your symptoms started (or 48 hours before you were tested if you had no symptoms), up until you started self-isolating. **Applies to non-healthcare community and workplace settings only.** Public Health will contact all positive cases. **These are general guidelines and actual Public Health direction may vary in specific situations.** For more information, visit: www.hpph.ca/coronavirus



COVID-19 Contact Tracing

